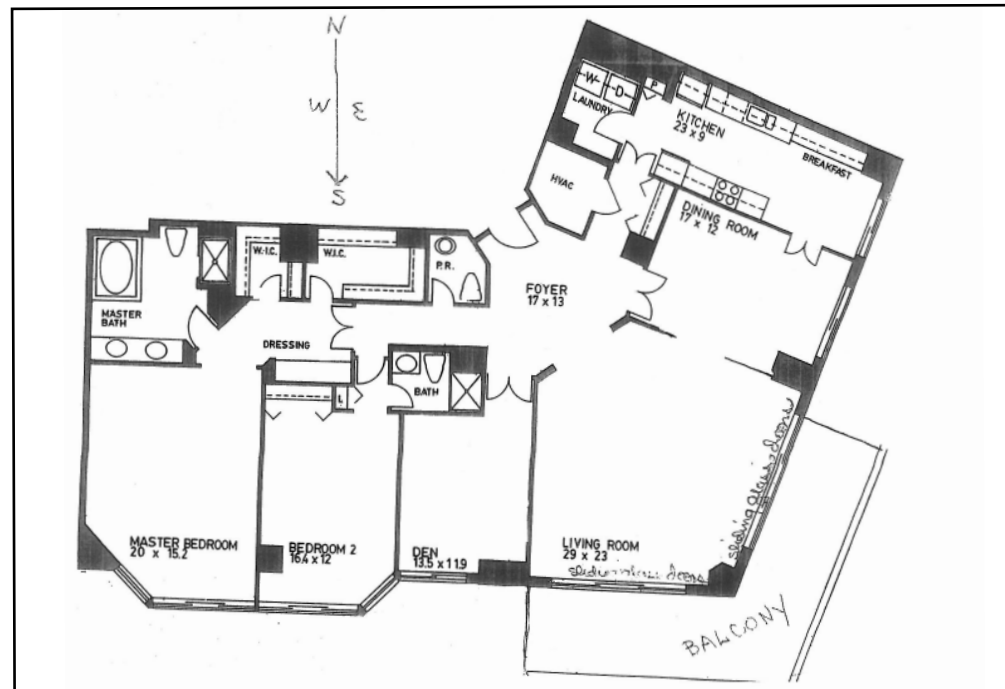


- **MARBLE FLOOR ENTRY FOYER**
- **POWDER ROOM** with marble floor and pedestal sink
- **LARGE LIVING ROOM** with room for grand piano
- **DINING ROOM**
- **KITCHEN** with table space, two wall ovens, cooktop with 5 electric burners, double door refrigerator /freezer, dish washer, garbage disposal, instant hot, double stainless steel sink, and ceramic tile floor
- **LAUNDRY ROOM** with stacked washer and dryer, laundry tub, and pantry shelves
- **DEN** with built in cabinets
- **BALCONY OPENS FROM TWO SIDES OF THE LIVING ROOM OFFERING TREE TOP VIEWS OF A LARGE AREA, BRIGHT SOUTH EAST EXPOSURE**
- **MASTER BEDROOM SUITE** with cabinetry and two walk-in closets
- **MASTER BATH IS ALL MARBLE** and has two sinks, Jacuzzi tub, separate glass shower stall
- **SECOND BEDROOM** with cabinetry and a large closet
- **SECOND BATH** with shower

ADDITIONAL INFORMATION:

- **Two heat pumps** maintained by Condo, two humidifiers
- **Storage area:** G3-38
- **Parking Space:** G1-40
- **Condo fee:** \$1809
- **Square feet:** 2,278 including balcony
- **Taxes:** est. \$16,915



Juanita Fogelman

Office: 202.552.5622

Cell: 301.523.2620

www.jfogelman.com



All information is deemed accurate, but as it is provided by third parties, it is not guaranteed.



5600 Wisconsin Ave #1506
Chevy Chase, MD 20815

Offered at \$1,695,000

Juanita Fogelman

Office: 202.552.5622

Cell: 301.523.2620

www.jfogelman.com



www.mceneaney.com

4315 50th Street, NW
Washington, DC 20016
202.552.5600

Specializing in the marketing
of fine residential properties.

5600 Wisconsin Ave #1506 Chevy Chase, MD 20815

Surround yourself with Somerset's incomparable lifestyle. This 18 acre enclave is like a country estate in the city just steps from vibrant urban activity. On nearby Wisconsin Avenue, residents enjoy shopping at Saks Fifth Avenue, Neiman Marcus, Tiffany & Company and Cartier along with many world class boutiques on our own Rodeo Drive. Two blocks to Friendship Heights Metro and lots of good restaurants dot the area. Twenty-four hour manned Gatehouse to greet you, your guests, and tradesmen. Uniformed doormen and valet parking for residents and guests.

A twenty-four hour concierge desk to assist you and a Party Room with kitchen for in-house entertaining in each of the three buildings. The Somerset Clubhouse is a stunning three-level spa and recreational facility. Three tennis courts, heated outdoor pool and indoor pool, sauna and steam rooms, racket ball and multipurpose courts, exercise room with state-of-the-art equipment, billiard, hobby and television rooms, card room, conference/board room, spacious lounge and an adjacent catering kitchen.

